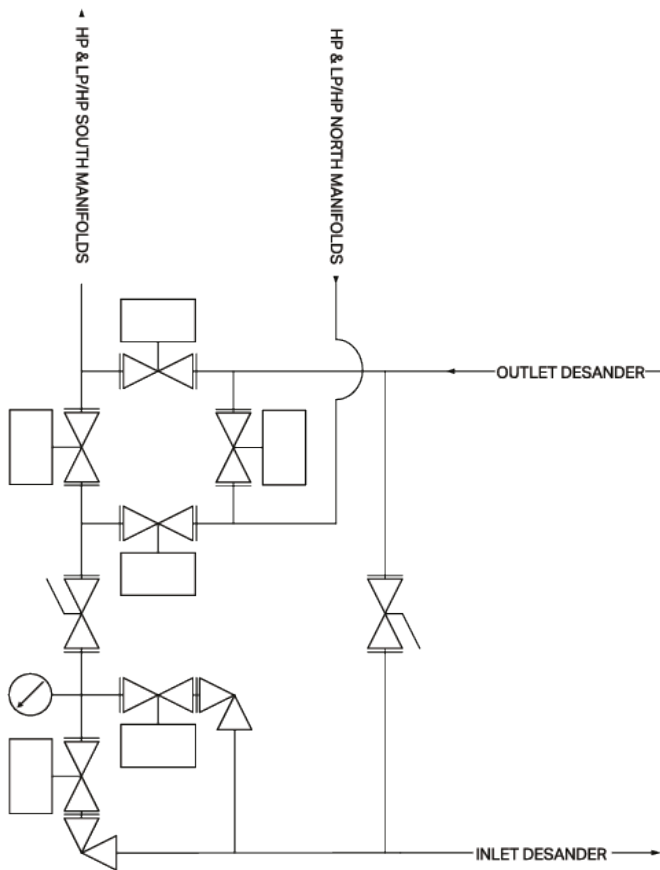
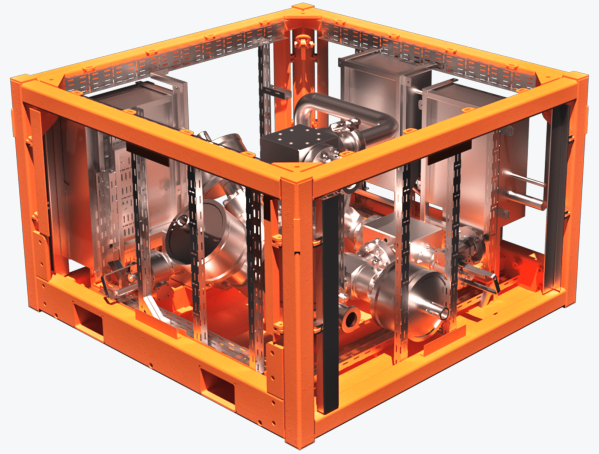




Product Summary

5K X-Flow™ Choke manifold consists of two individual choke valves with integrated changeable flow path.

5K X-Flow™ Choke manifold consists of two individual choke valves with integrated changeable flow path. The 5K X-Flow™ Choke Manifold was originally designed for offshore production platforms, where flow routing from individual production manifolds required to be x-flowed (i.e. HP to LP production manifold). The 5K X-Flow™ Choke Manifold reduces the amount of temporary flowback iron commonly in half. (FourPhase Patent pending).



100555_1.7 Technical specification 5K X-Flow Choke Manifold



Technical Specification

SI U.S.

Pressure

Working Pressure: 1-345 bar (1-5 000 psi)

Design Pressure: 345 bar (5 000 psi)

Capacity

Maximum flow rate (fluid): 3 168 m³ (19 926 bbl/day)

Maximum flow rate (gas): 565 000 Sm³/day (20.0 MMscf/day)

Dimensions

Height: 1200 mm (3.9 ft)

Width: 2000 mm (6.6 ft)

Depth: 2000 mm (6.6 ft)

Weight: 5 000 kg (11 000 lb)

Interfaces

Flowing piping: 3"

Flanges: 2-9/16"

Temperature

Min operating temp: -28 °C (-18,4 °F)

Max operating temp: +120 °C (+248 °F)

Certification

NACE MR0175-97

522 Regulation for machines

Norsok Z-015

Materials

Valves: Stainless AISI 410

Pipes: Super Duplex UNS 31803

Frame: Carbon steel, NVE 36

Nuts, bolts: L7 + Standard galvanic 8.8

Seal rings: Viton / Duplex / 316L / 6MO